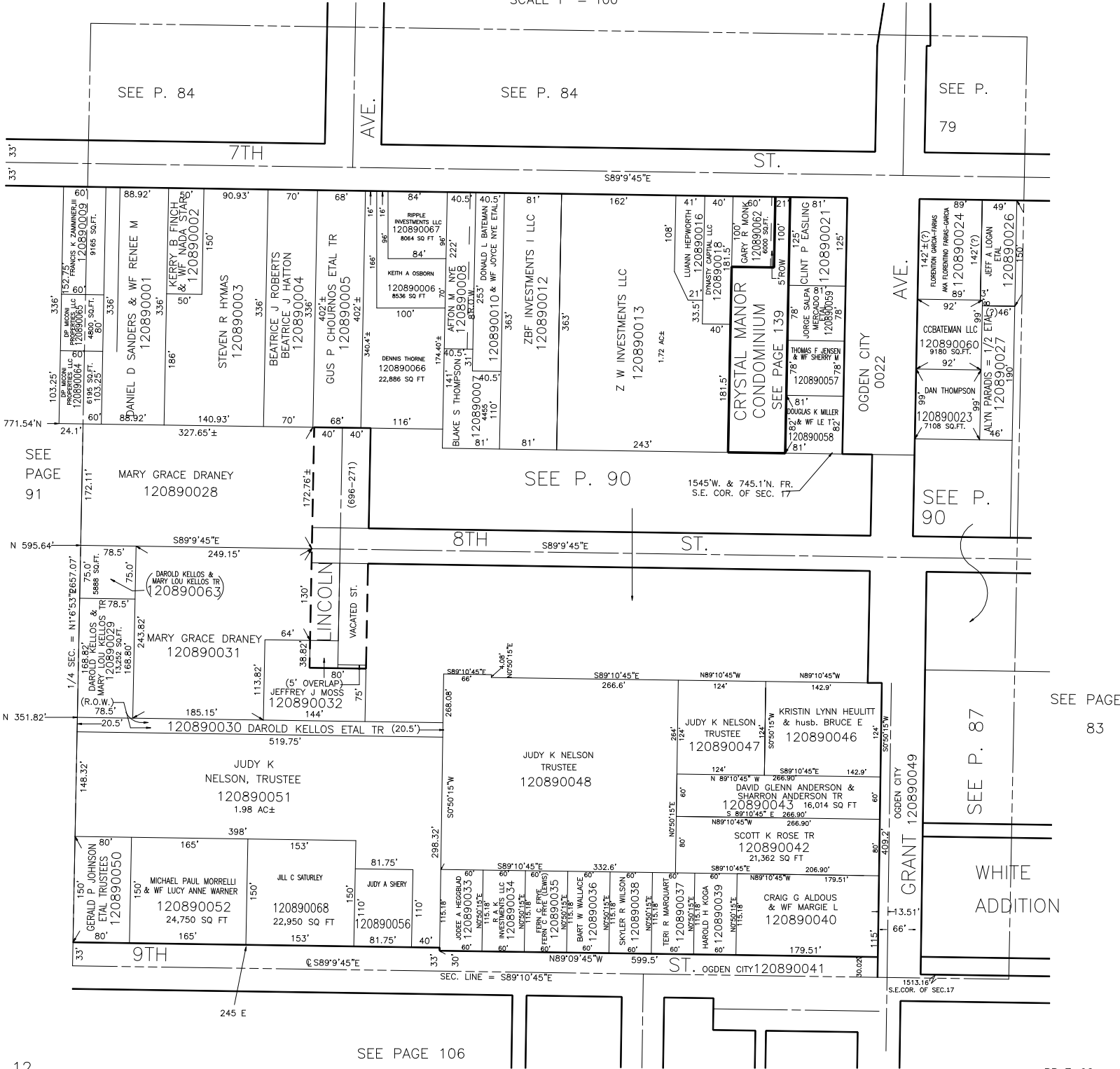


THE S.W. 1/4 OF THE S.E. 1/4 OF SECTION 17, T.6N.,R.1W., S.L.B.&M.

IN OGDEN CITY
SCALE 1" = 100'

TAXING UNIT: 25



SEE PAGE 91

SEE P. 90

SEE P. 90

SEE P. 87

SEE PAGE 83

SEE PAGE 106